



Town of Boonsboro Planning

DATE: May 9, 2024

TO: Mayor & Council
Town Manager

FROM: Andrew J. Bowen
Staff Planner

SUBJECT: OUT OF TOWN – WATER & SEWER CONNECTION POLICY

ISSUE

Should the Mayor and Council adopt a policy for connection to the Town's Water and/or Sewer Systems outside of the corporate limits of the Town of Boonsboro?

BACKGROUND

The Town has been approached on multiple occasions with requests from property owners, outside the corporate limits of Boonsboro, to connect to the Water Distribution System. The Town currently has no policy for connection to our Water and Sewer System outside the Town limits. The BMUC spent the last two (2) months drafting a policy. After lengthy discussions, the BMUC is recommending the attached policy be approved by the Mayor and Council.

RECOMMENDATION

Staff would recommend approval of the Out of Town Water and Sewer Service Connection Policy.

ATTACHMENTS

- ***DRAFT*** - Out of Town Water and Sewer Service Connection Policy



Boonsboro Municipal Utilities Commission (BMUC)

Out of Town Water & Sewer Service
Connection Policy

DRAFT

**Boonsboro Municipal Utilities Commission
(BMUC)**

**Policy for Connection to the Town of Boonsboro
Public Water & Sewer Connections – Outside Town Boundaries**

It is the policy of the Town of Boonsboro that it is preferred to provide water and sewer service to properties within the Town boundaries. However, due to public health concerns with karst geology in the area, the Town of Boonsboro was required to provide public water services outside of the Town boundaries. This policy addresses future connection to the Town's public water system outside of the Town boundaries. Properties within the Town boundaries are required to follow the subdivision procedures which are in the Town Code.

1. **WATER:** The Town of Boonsboro will not allow connection(s) to the Town's water system unless the properties that are outside the Town limits have been determined that there poses a verifiable potential public health threat by the Maryland Department of the Environment OR Washington County Health Department.
 - i. Special Exception – Properties outside the Town boundaries, adjacent to the Town's water lines, are allowed to connect to the Town's water system with no greater than a 1-1/2" water service connection at prevailing rates.

2. **SEWER:** *[RESERVED]*

THE MAP ATTACHED SHOW THE WATER LINES THAT THIS POLICY ADDRESSES.

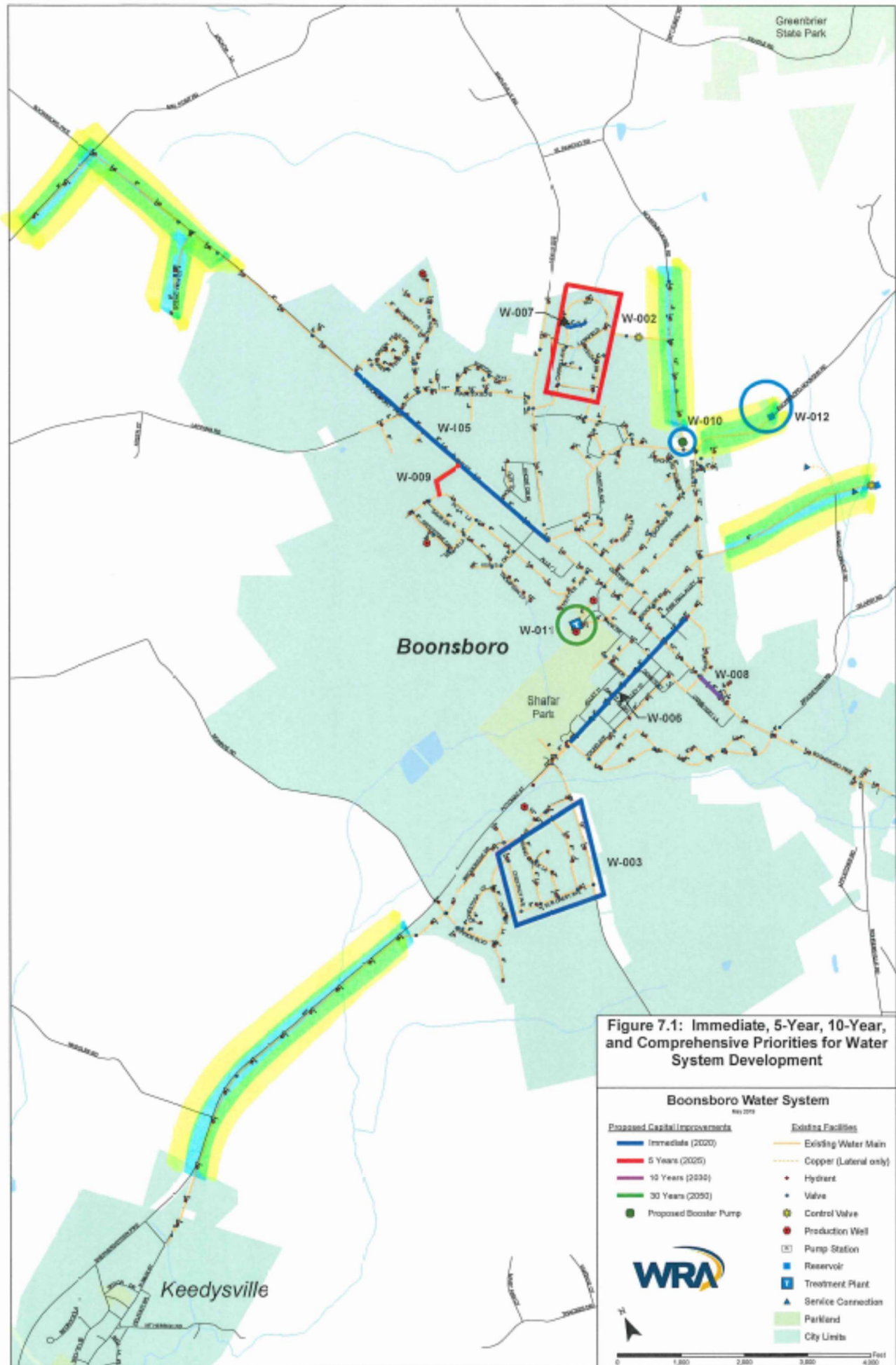


Figure 7.1: Immediate, 5-Year, 10-Year, and Comprehensive Priorities for Water System Development