



# Boonsboro Municipal Utilities Commission (BMUC)

Out of Town Water & Sewer Service  
Connection Policy

***DRAFT***

**Boonsboro Municipal Utilities Commission  
(BMUC)**

**Policy for Connection to the Town of Boonsboro  
Public Water & Sewer Connections – Outside Town Boundaries**

It is the policy of the Town of Boonsboro that it is preferred to provide water and sewer service to properties within the Town boundaries. However, due to public health concerns with karst geology in the area, the Town of Boonsboro was required to provide public water services outside of the Town boundaries. This policy addresses future connection to the Town's public water system outside of the Town boundaries. Properties within the Town boundaries are required to follow the subdivision procedures which are in the Town Code.

1. **WATER:** The Town of Boonsboro will not allow connection(s) to the Town's water system unless the properties that are outside the Town limits have been determined that there poses a verifiable potential public health threat by the Maryland Department of the Environment OR Washington County Health Department.
  - i. Special Exception – Properties outside the Town boundaries, adjacent to the Town's water lines, are allowed to connect to the Town's water system with no greater than a 1-1/2" water service connection at prevailing rates.
  
2. **SEWER:** *[RESERVED]*

***THE MAP ATTACHED SHOW THE WATER LINES THAT THIS POLICY ADDRESSES.***

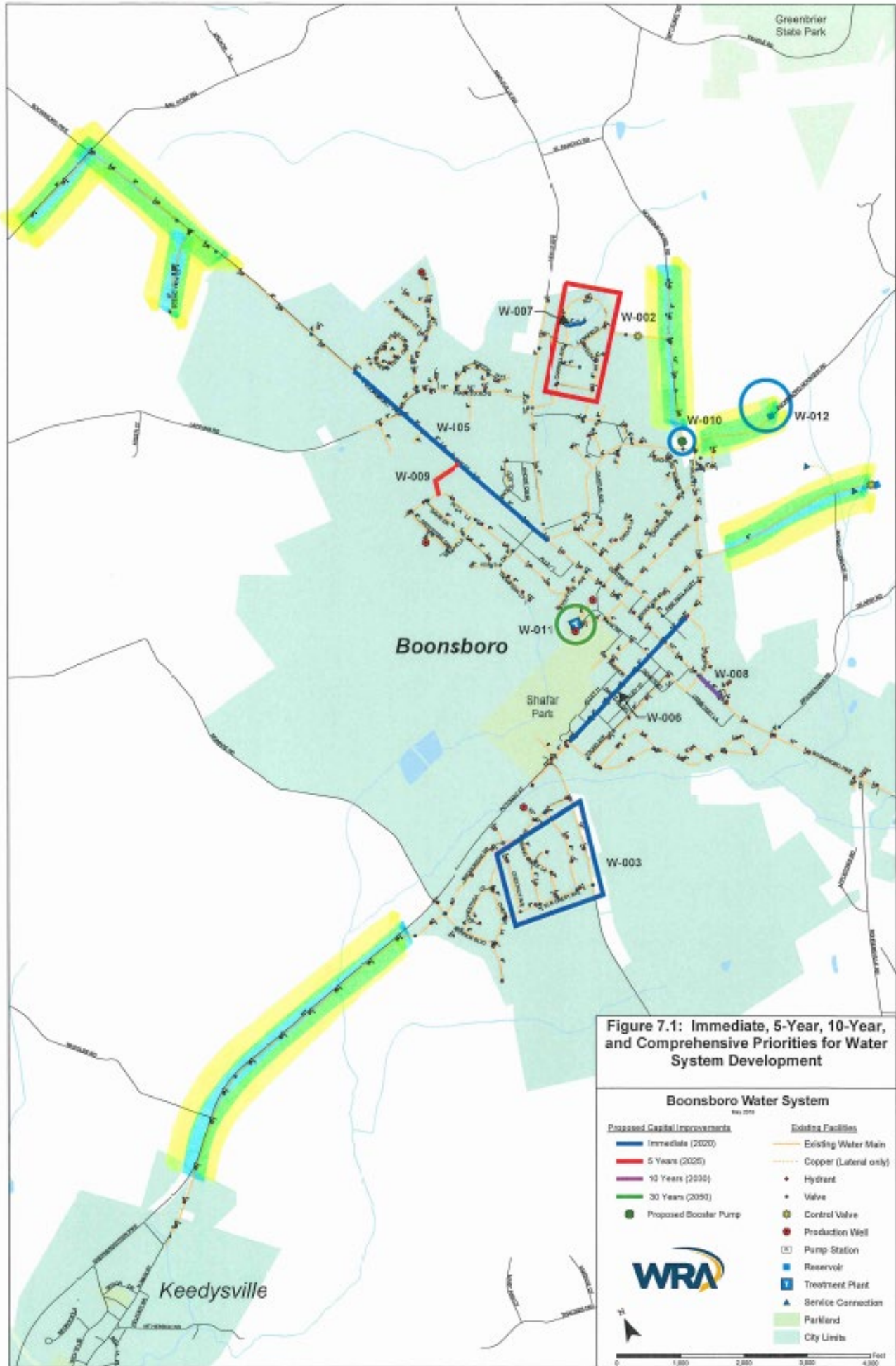


Figure 7.1: Immediate, 5-Year, 10-Year, and Comprehensive Priorities for Water System Development

**Boonsboro Water System**  
100,000

<b>Proposed Capital Improvements</b>	<b>Existing Facilities</b>
<ul style="list-style-type: none"> <li>— Immediate (2020)</li> <li>— 5 Years (2025)</li> <li>— 10 Years (2035)</li> <li>— 30 Years (2050)</li> <li>● Proposed Booster Pump</li> </ul>	<ul style="list-style-type: none"> <li>— Existing Water Main</li> <li>— Copper (Lateral only)</li> <li>• Hydrant</li> <li>• Valve</li> <li>• Control Valve</li> <li>• Production Well</li> <li>□ Pump Station</li> <li>■ Reservoir</li> <li>■ Treatment Plant</li> <li>▲ Service Connection</li> <li>■ Parkland</li> <li>■ City Limits</li> </ul>

**WRA**

0 1,000 2,000 3,000 4,000 Feet