

LANDSCAPE IMPROVEMENT PLAN

FOR

TOWN OF BOONSBORO

SITUATED ALONG MAIN STREET BETWEEN ORCHARD DRIVE AND REEDERS ALLEY
TOWN OF BOONSBORO
WASHINGTON COUNTY, MARYLAND

CLIENT/OWNER/DEVELOPER:

TOWN OF BOONSBORO
12 NORTH MAIN STREET
BOONSBORO, MD 21713

EMAIL:

TOWNMANAGER@TOWNOFBOONSBORO.COM
PHONE: (301)-473-3123

CIVIL ENGINEER / SURVEYOR:

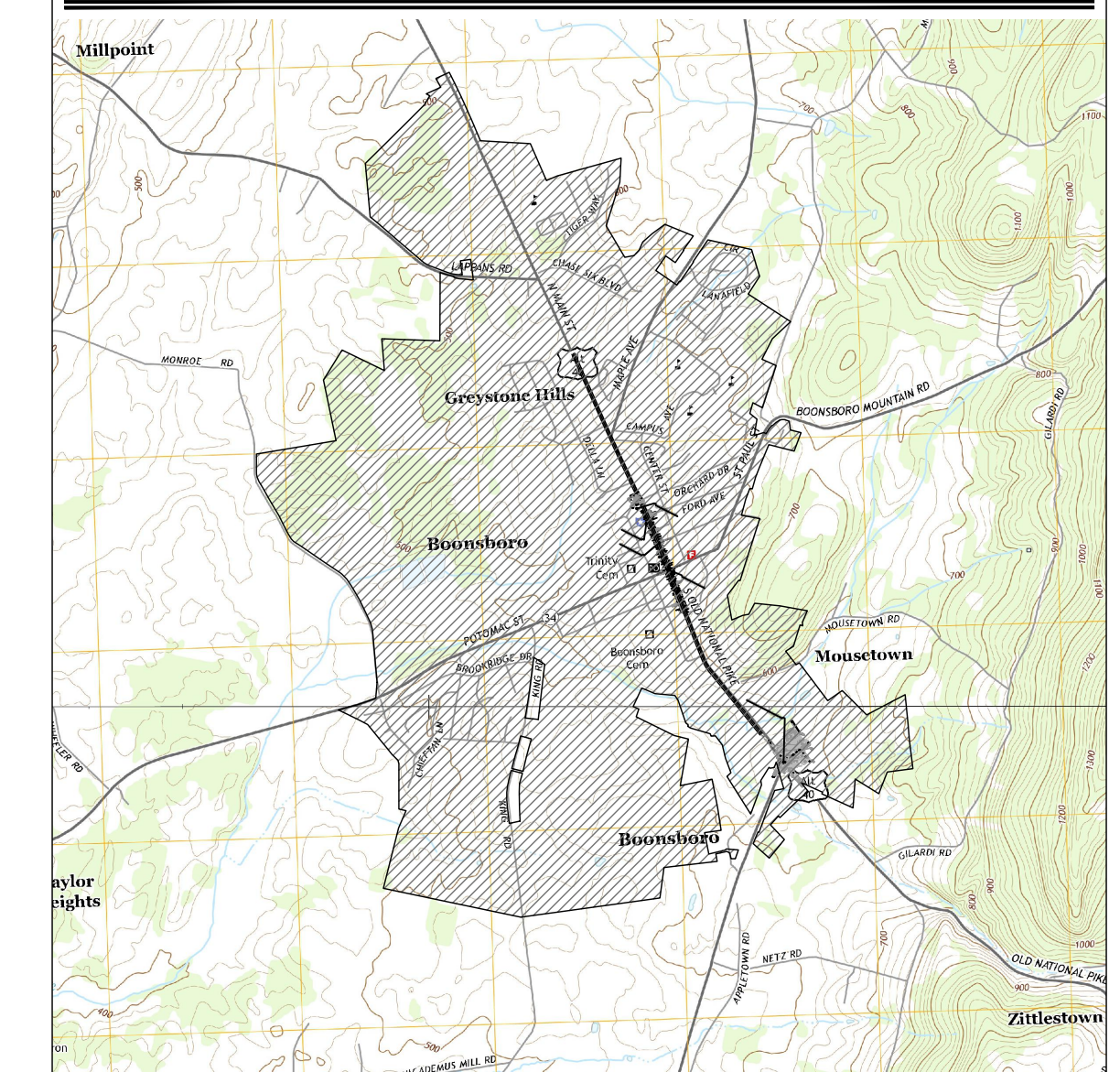
FREDERICK, SEIBERT & ASSOC. INC.
20 WEST BALTIMORE STREET
GREENCASTLE, PA, 17225

PROJECT MANAGER: ADAM HAGER

EMAIL: AHAGER@FSA-INC.COM
PHONE: (301)-791-3650

VICINITY MAP

SCALE: 1" = 3,000' ADC MAP 27, D4
USGS MAPS (FUNKSTOWN, KEEDYSVILLE)

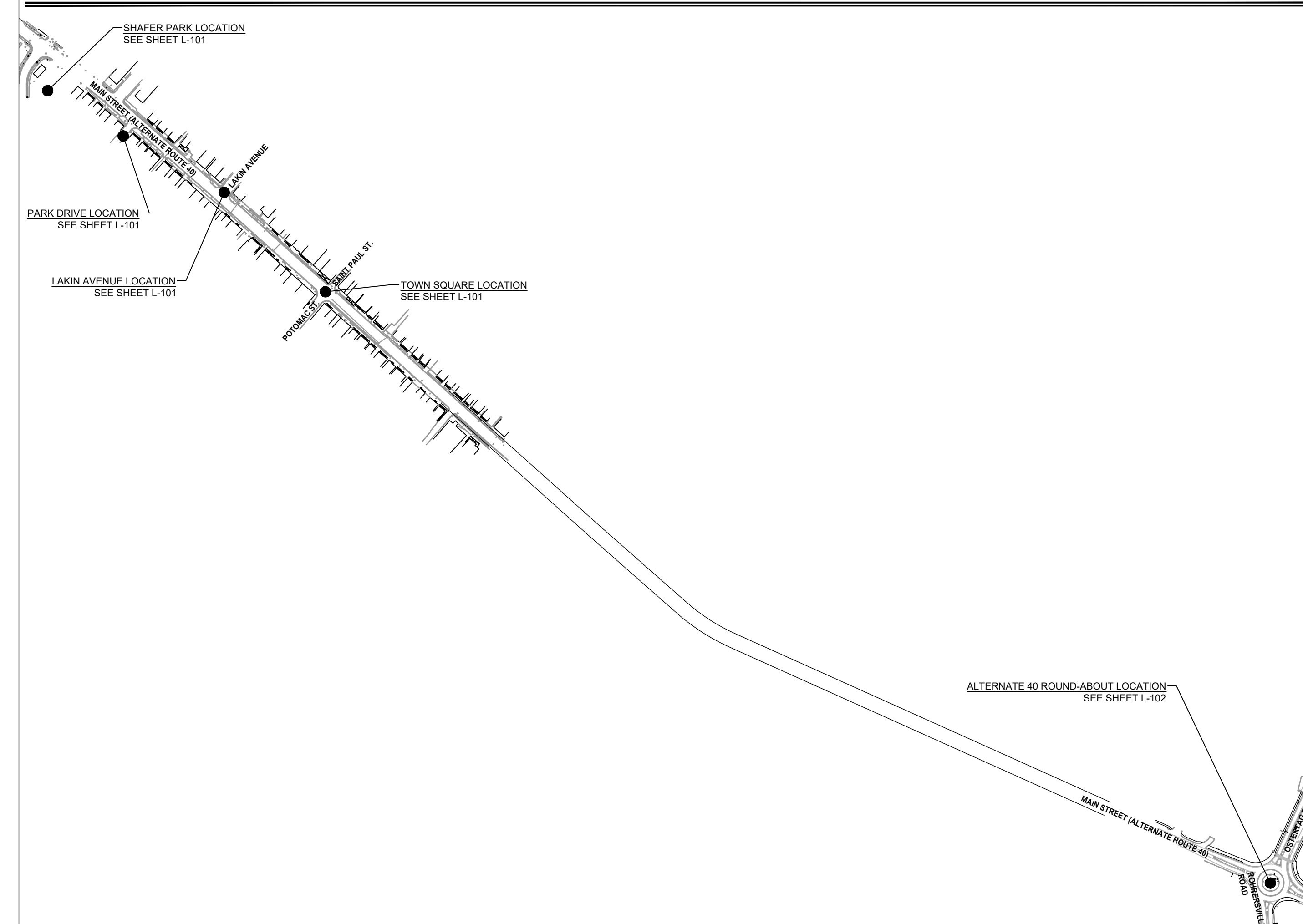


SHEET INDEX

TYPE	NUMBER	TITLE
C-001	SHEET 01	COVER SHEET
L-101	SHEET 02	LANDSCAPE PLAN
L-102	SHEET 03	LANDSCAPE PLAN
L-501	SHEET 04	LANDSCAPE DETAILS AND NOTES

LOCATION PLAN

SCALE: 1" = 300'



LEGEND

	EXISTING	PROPOSED
SUBJECT BOUNDARY	=====	=====
BUILDING SETBACK LINE	=====	=====
RIGHT OF WAY	=====	=====
EASEMENT LINE	=====	=====
ADJOINER BOUNDARY	=====	=====
FENCE (METAL)	=====	=====
FENCE (WOODEN)	=====	=====
DITCH (STREAM)	=====	=====
EDGE OF WATER	=====	=====
WETLAND	=====	=====
FLOODPLAIN	=====	=====
SOIL BOUNDARY	=====	=====
RAILWAY	=====	=====
CENTERLINE	=====	=====
EDGE OF PAVEMENT	=====	=====
EDGE OF GRAVEL	=====	=====
CURB	=====	=====
WALL	=====	=====
GUARD RAIL	=====	=====
EDGE OF CONCRETE	=====	=====
BUILDING	=====	=====
MAIL BOX	MB	MB
SIGN (ROAD)	○	○
SIGN (SITE)	○	○
TRAFFIC SIGNAL	○	○
TOPOGRAPHIC FEATURES		
CONTOUR (INDEX)	500	500
CONTOUR (INTERMEDIATE)	501.65	501.65
SPOTS ELEVATION	X	X
VEGETATION AREAS		
TREELINE	=====	=====
DECIDUOUS TREES	○	SEE LANDSCAPE SHEET FOR LEGEND
EVERGREEN TREES	○	SEE LANDSCAPE SHEET FOR LEGEND
SANITARY SEWER	=====	=====
GRAVITY LINE	=====	=====
FORCE MAIN LINE	=====	=====
LATERAL	=====	=====
MANHOLE	SS	SS
CLEANOUT	○	○
VALVE	○	○
WATER	=====	=====
COLD WATER LINE	=====	=====
HOT WATER LINE	=====	=====
MANHOLE	WH	WH
FIRE HYDRANT	○	○
VALVE	○	○
METER	○	○
WELL	○	○
STORM DRAINAGE	=====	=====
STORM SEWER LINE	=====	=====
ROOF DRAIN LINE	=====	=====
MANHOLE	SW	SW
INLETS	○	○
CLEANOUT	○	○
UTILITIES		
GAS LINE	=====	=====
ELECTRICAL LINE	=====	=====
FIBER OPTIC LINE	=====	=====
COMMUNICATION LINE	=====	=====
OVERHEAD LINES	=====	=====
MANHOLE	EH	EH
PEDS. BOX, & ETC	○	○
POLE	○	○
LIGHT POLE	○	○
GAS METER	○	○
GAS VALVE	○	○

DRAFT

FSA PUBLIC
FREDERICK, SEIBERT & ASSOC. INC.
CIVIL ENGINEER / SURVEYOR / LANDSCAPE ARCHITECTS & LAND PLANNERS

DATE: _____
DESCRIPTION: _____

BOONSBORO BEAUTIFICATION PROJECT
NOT APPROVED FOR CONSTRUCTION

PROJECT NO: 2022-0269
DWN BY: CAD
DATE: 04-25-2023
PROJECT MANAGER: Adam Hager
EMAIL: AHager@fsa-inc.com
PROPERTY INFORMATION
SCALE: AS SHOWN
SHEET TITLE: COVER SHEET
C-001
SHEET 01 OF 04



PLANT SCHEDULE

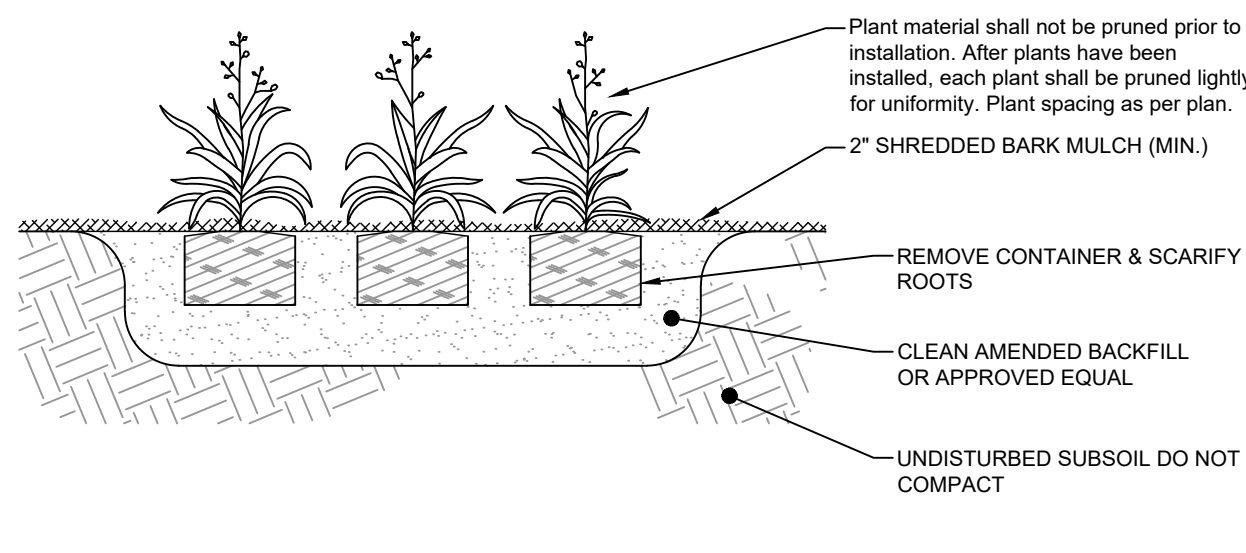
TREES	CODE	BOTANICAL / COMMON NAME	SIZE	CONTAINER	QTY	DETAIL
	AME GRA	Amelanchier x grandiflora 'Autumn Brilliance' / 'Autumn Brilliance' Serviceberry	2.5" Cal.	B&B	5	3/L-501
	COR KOU	Cornus kousa / Kousa Dogwood	2.5" Cal.	B&B	5	3/L-501
	MAG SOU	Magnolia x soulangeana / Saucer Magnolia	2.5" Cal.	B&B	1	3/L-501
SHRUBS	CODE	BOTANICAL / COMMON NAME	SIZE	CONTAINER	QTY	DETAIL
	ABE KAL	Abelia x grandiflora 'Kaleidoscope' / Kaleidoscope Glossy Abelia	3 gal.		14	1/L-501
	AJU BSC	Ajuga reptans 'Black Scallop' / Black Scallop Carpet Bugle	1 gal.		33	1/L-501
	BUD DAV	Buddleja davidii / Butterfly Bush	3 gal.		3	2/L-501
	BUX WI2	Buxus microphylla japonica 'Winter Gem' / Winter Gem Boxwood	3 gal.		19	2/L-501
	COT STR	Cotoneaster dammeri 'Streibs Finding' / Streibs Finding Cotoneaster	3 gal.		14	2/L-501
	HEM KW2	Hemerocallis fulva 'Kwanso' / Daylily	1 gal.		14	1/L-501
	HEU BBI	Heuchera x 'Blackberry Ice' / Dolce® Blackberry Ice Coral Bells	1 gal.		21	1/L-501
	HYD J23	Hydrangea paniculata 'Jane' / Little Lime® Panicle Hydrangea	3 gal.		5	2/L-501
	JUN PNN	Juniperus procumbens 'Nana' / Dwarf Japanese Garden Juniper	3 gal.		13	2/L-501
	KNI XTH	Kniphofia x 'Rocket's Red Glare' / Rocket's Red Glare Hot Poker	1 gal.		10	1/L-501
	LIR MUS	Liriope muscari / Lily Turf	1 gal.		313	1/L-501
	NAN POW	Nandina domestica 'Firepower' / Firepower Heavenly Bamboo	3 gal.		26	2/L-501
	PIE MOU	Pieris japonica 'Mountain Fire' / Mountain Fire Japanese Pieris	3 gal.		2	2/L-501
	RHO MEM	Rhododendron x 'Ben Morrison' / Ben Morrison Azalea	3 gal.		4	2/L-501
	ROS FBD	Rosa hybrida 'Drift' / Drift Rose Series	3 gal.		22	2/L-501
	SAL MA3	Salvia x sylvestris 'May Night' / May Night Sage	1 gal.		9	1/L-501

GENERAL LANDSCAPE NOTES:

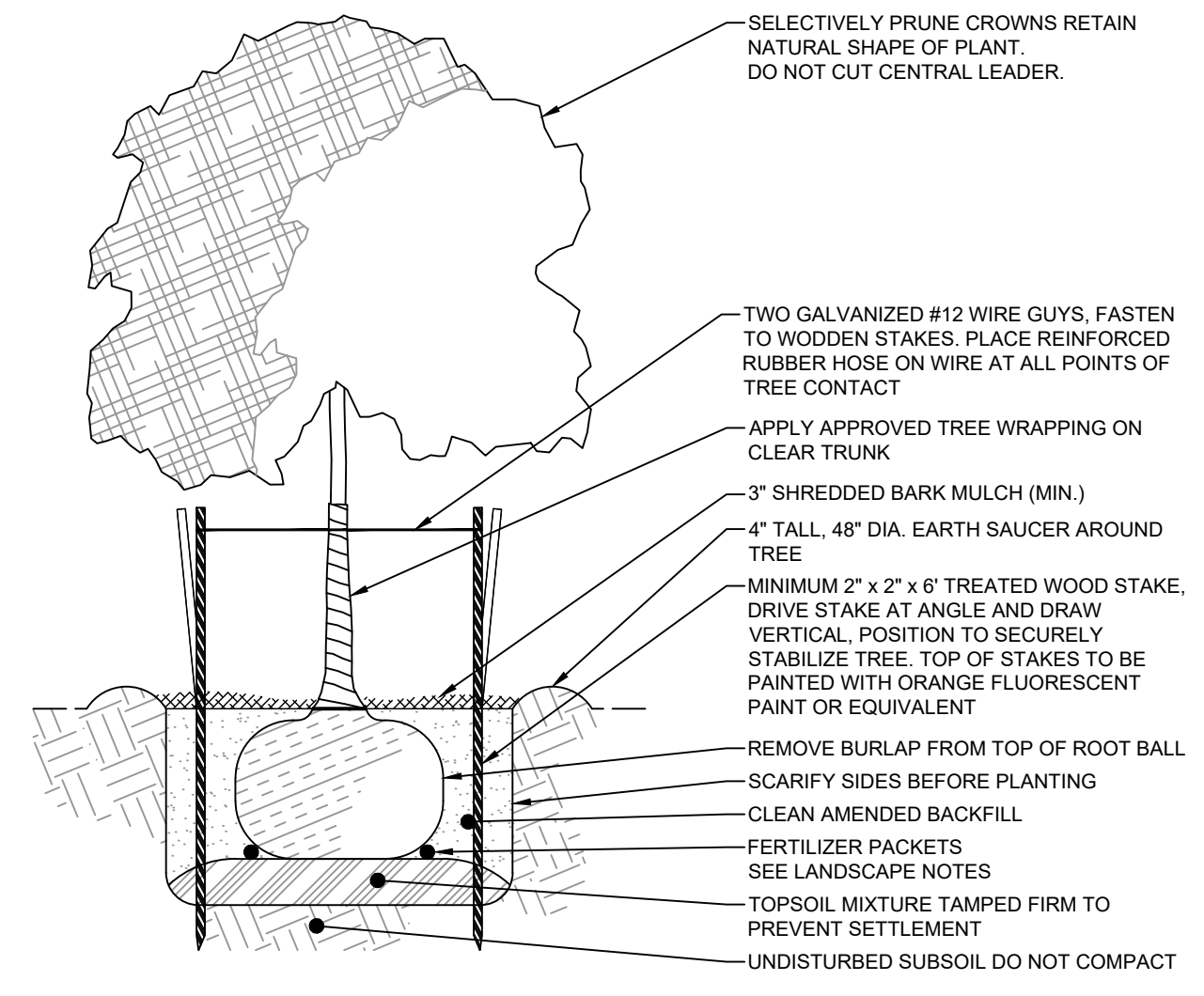
- Landscape contractor is to call Miss Utility and have all underground utilities marked prior to any digging or planting.
- Landscape Contractor shall install all plant material in a timely fashion.
- Landscape Contractor shall be responsible for all watering, weeding, repairs and replacements prior to final acceptance.
- NO Substitutions of plant material without written permission of FSA. Planting plans have been proposed with plant sizes, types, and locations as important design elements.
- Plants shall be in accordance with the current issue of American Standards for Nursery Stock published by the American Association of Nurserymen.
- All plants shall be watered thoroughly during installation and prior to final acceptance.
- All bark mulched areas shall be first covered with Typar Weed Barrier or approved equal.
- All planting bed areas on the site shall be mulched with a hardwood bark mulch at a depth of approx. 3", unless noted otherwise.
- Plant material shall be inspected yearly in order to remove and replace dead, diseased vegetation.
- Warranted plant material that is 25% dead or more shall be considered dead and shall be replaced at no charge.
- All plant material shall be warranted for two years. 60 days prior to the end of the warranted period, the Engineering Department shall perform an inspection. Of which there should be an 90% survival rate of all plant material. All surviving plant material shall be found in a healthy condition. The warranty shall commence on the date of initial acceptance by the owner.
- The landscape contractor shall conduct a final inspection with the owner or owner's representative at the end of the warranty period.
- Fertilizer Packets are to be Nutri-Pak 16-8-8 or approved equal per manufacturer's recommendations.
- Landscape is recommended to be installed during the two growing seasons.
Spring: April 15-June 15, Fall: September 1-November 1.

MAINTENANCE:

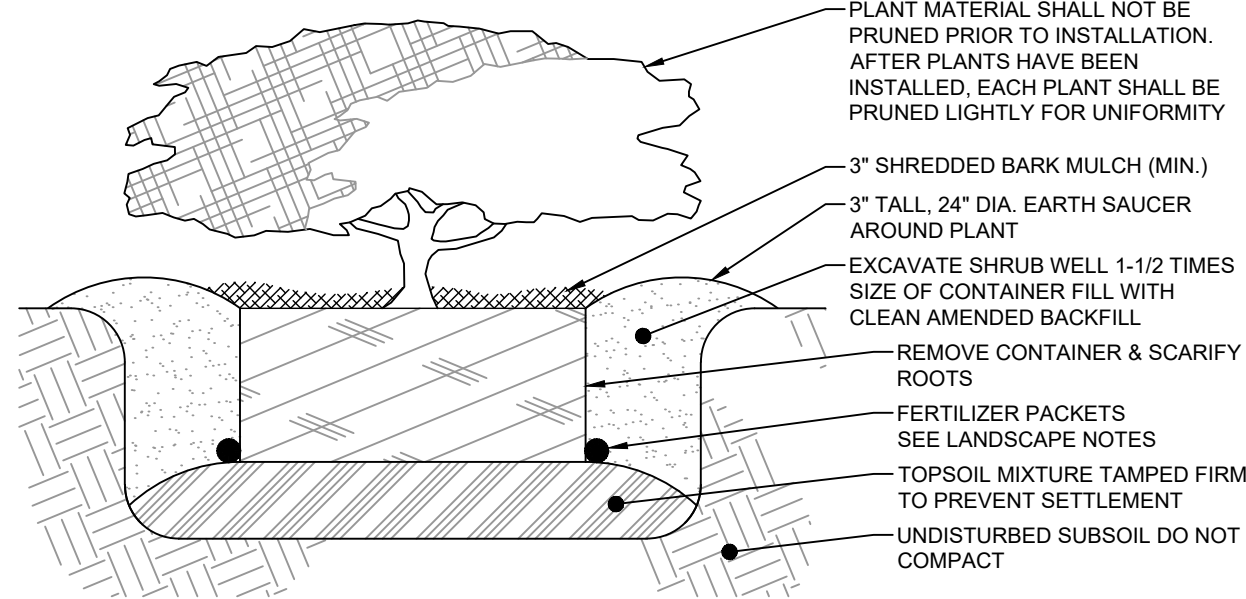
- All trash and debris should be removed from the top of the wetland area as necessary.
- Areas devoid of mulch shall be re-mulched on an annual basis.



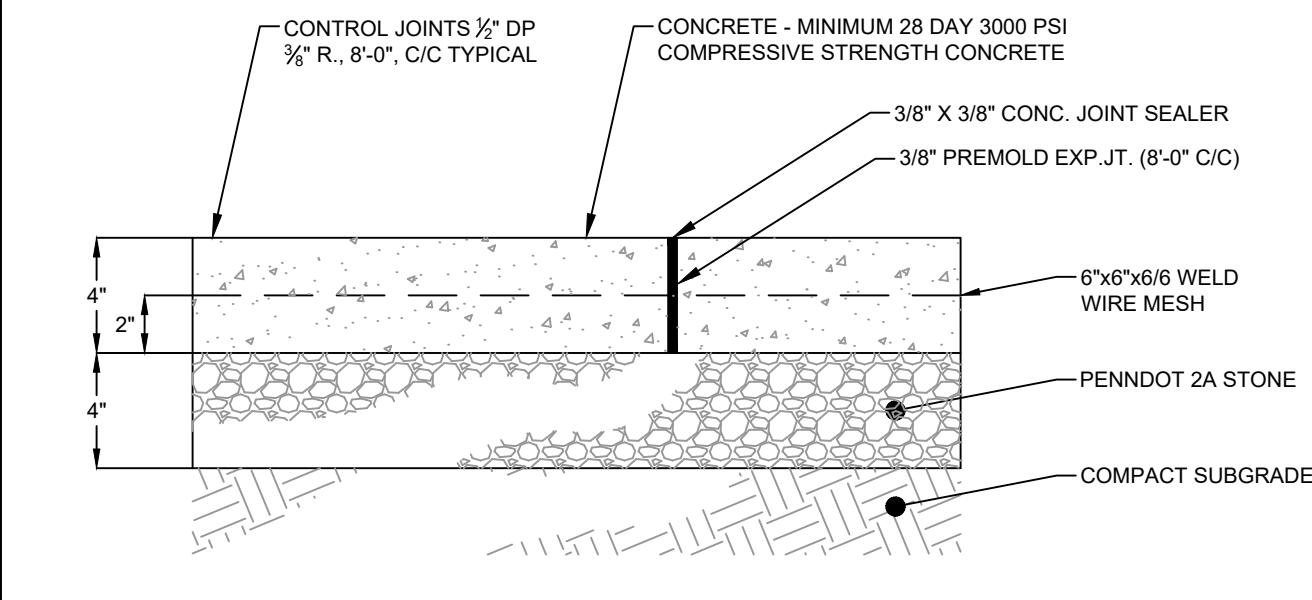
SECTION
1
L-501
CONTAINER PLANTING - GROUNDCOVER
NOT TO SCALE



SECTION
3
L-501
PLANTING - TREE (Up to 2-1/2" Cal.)
NOT TO SCALE



SECTION
2
L-501
CONTAINER PLANTING - SHRUB
NOT TO SCALE



SECTION
4
L-501
SIDEWALK - CONCRETE
NOT TO SCALE

DRAFT

Professional Certification
I hereby certify that these documents were prepared or approved by me and that I am a duly licensed professional engineer in the State of Maryland.
Date: 04/25/2023 License # 200001
Expiration Date: 03/31/2025

FSA CONSULTING
FREDERICK, SEBET & ASSOCIATES, INC.
CIVIL ENGINEERS • SURVEYORS • LANDSCAPE ARCHITECTS • LAND PLANNERS
100 SOUTH HANOVER STREET
FREDERICK, MARYLAND 21701
771.275.1007

DATE	DESCRIPTION

BOONSBORO BEAUTIFICATION PROJECT
Shaded Area Shows Planting Area and Detail of Planting
BOONSBORO, MARYLAND
WASHINGTON COUNTY, MARYLAND
TOWN OF BOONSBORO, C/O PAUL MANTELLO
21 NORTH MAIN STREET, BOONSBORO, MD 21713
301.473.5123

PROJECT NO: 2022-0269
DWN BY: CAD DATE: 04-25-2023
PROJECT MANAGER: Adam Hager
EMAIL: AHager@fsa-inc.com
PROPERTY INFORMATION

SCALE: AS SHOWN
SHEET TITLE: LANDSCAPE PLAN

L-501
SHEET 04 OF 04